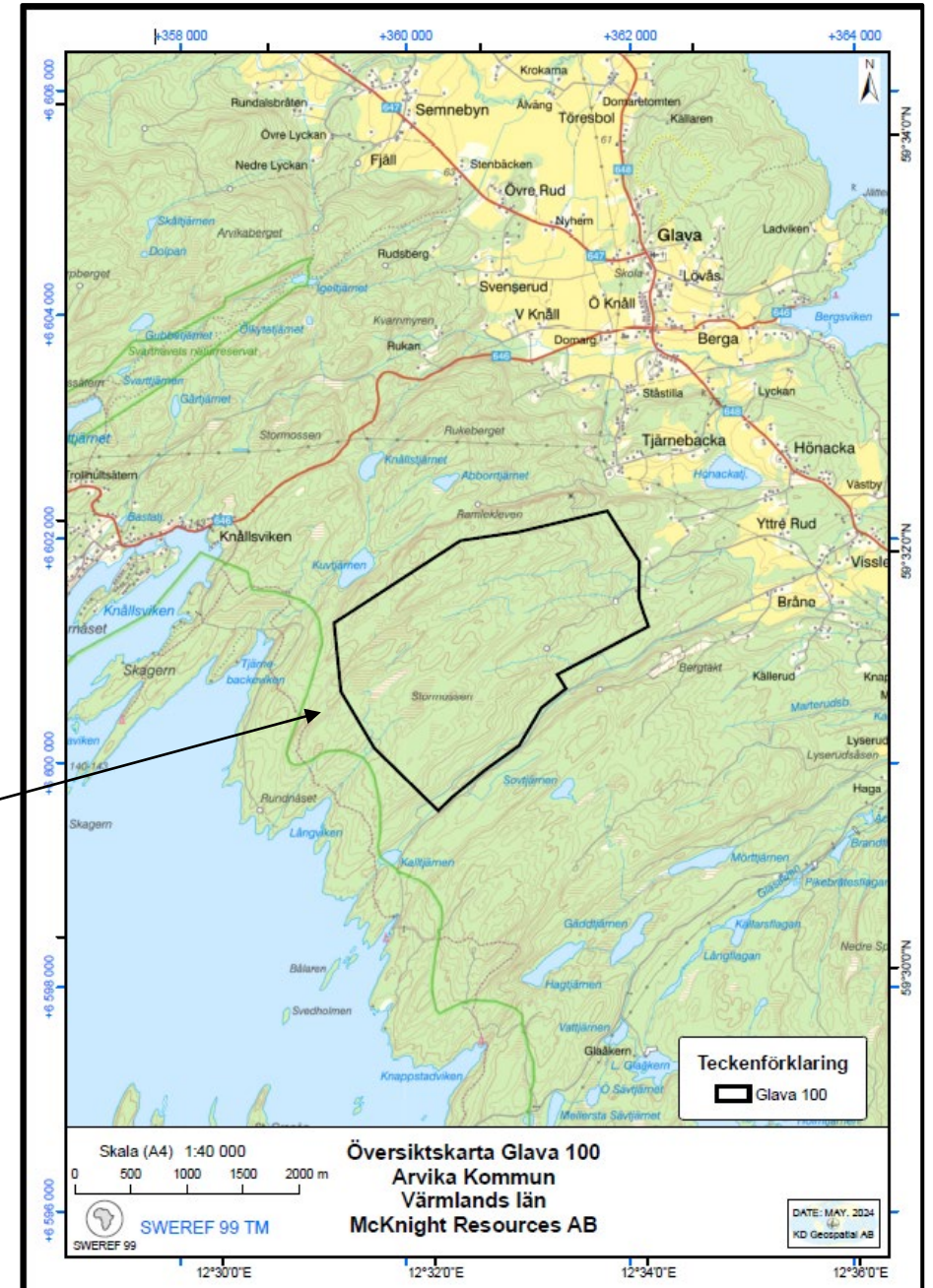
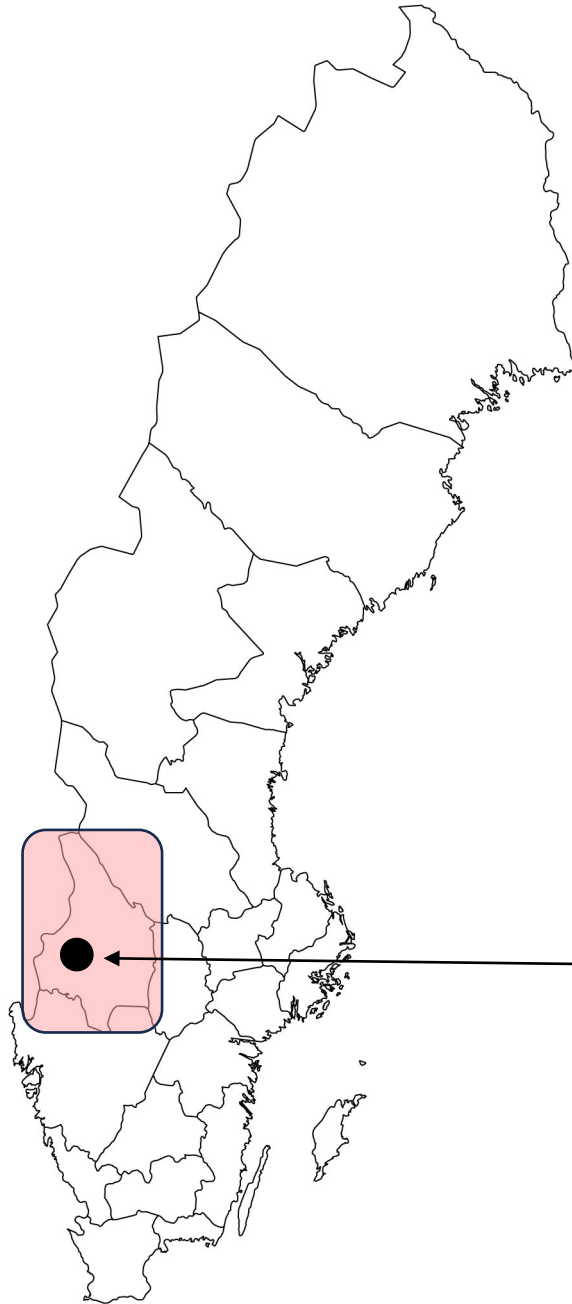
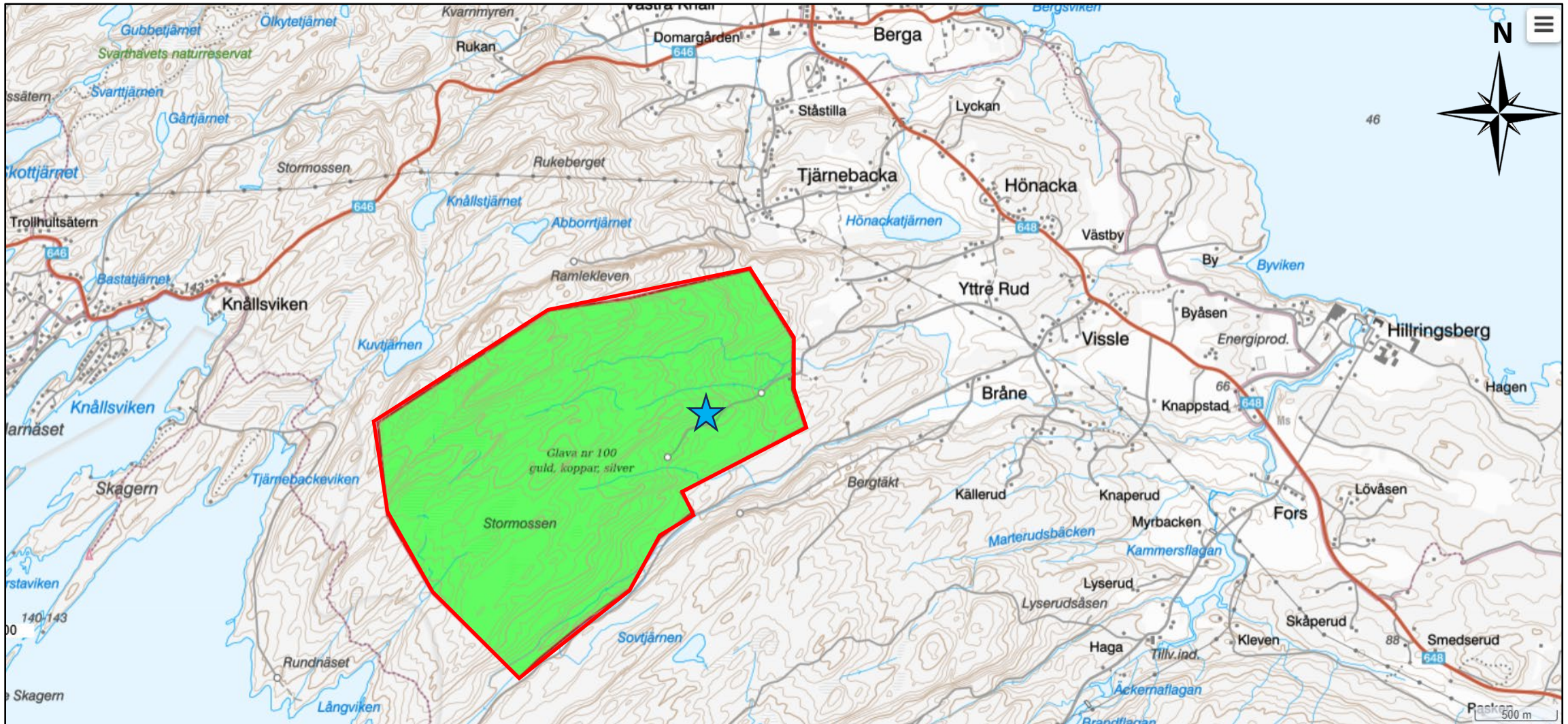


# Glava 100 in Värmland chalcocite target



# GLAVA 100 - permit

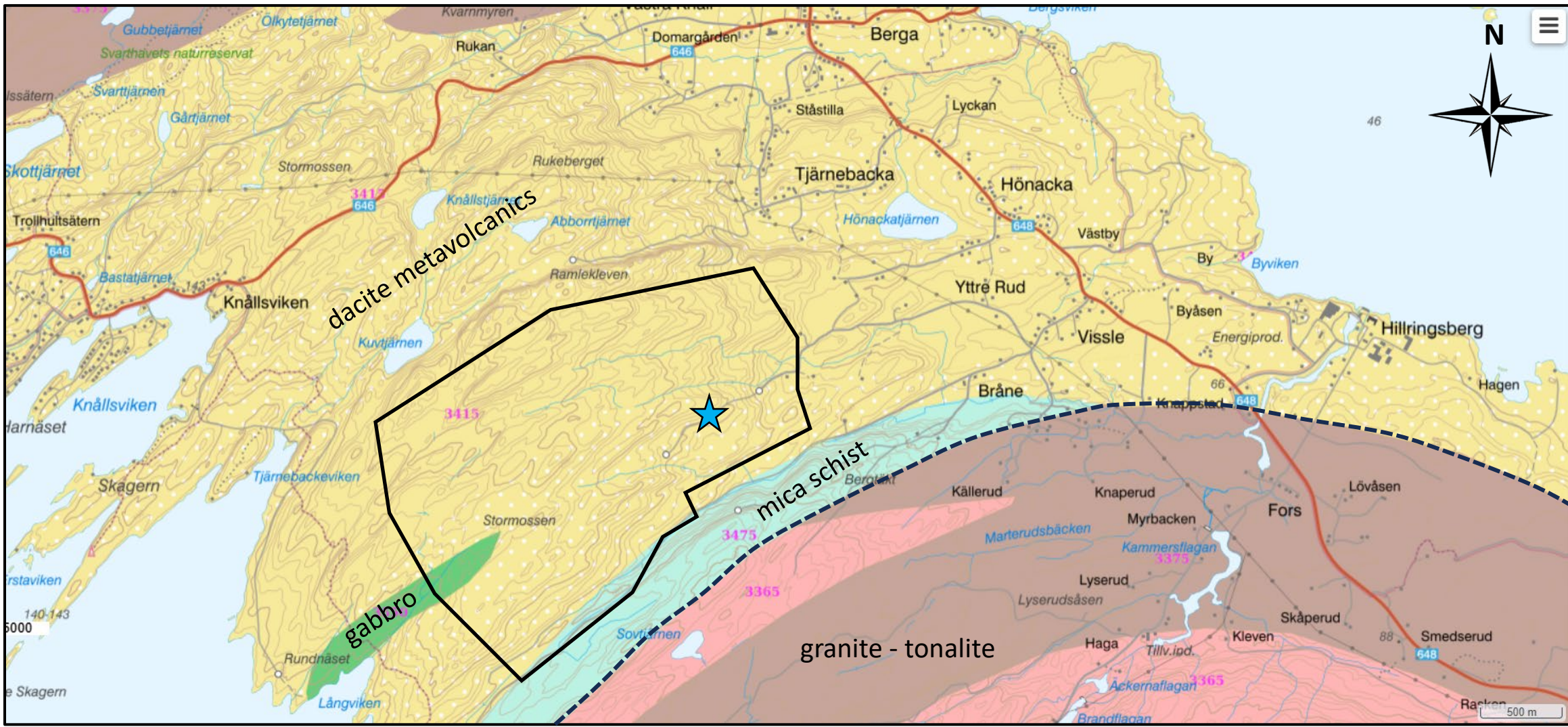
430ha



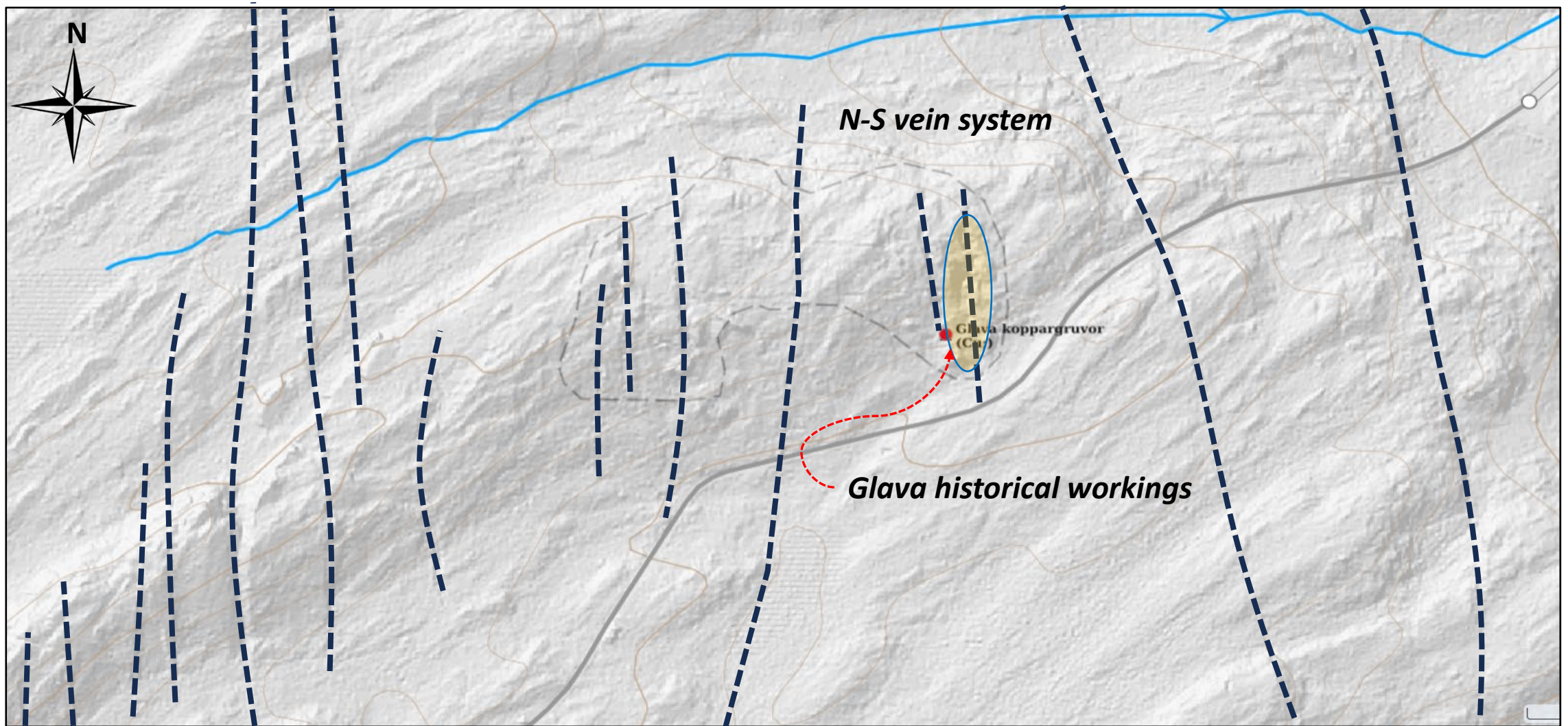
★ Glava workings (1916-18, 544t ore, 10% Cu)

chalcocite with gold telluride

# GLAVA 100 - geology



# GLAVA 100 – structural lineaments



GLV1



Cu: 1.38%

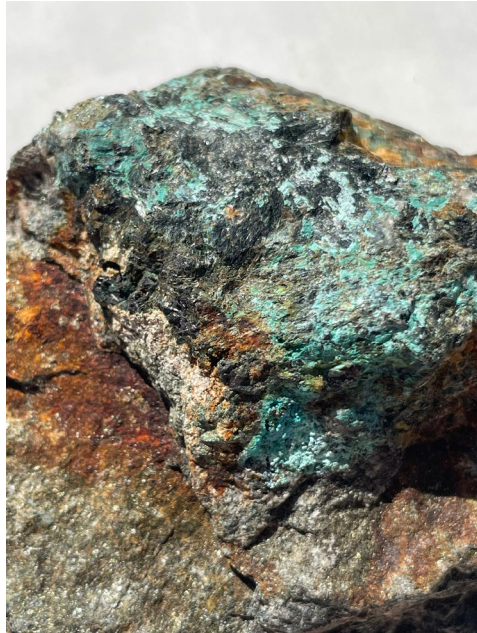
Au: 2.27 g/t

Ag: 43 g/t

Te: 54 g/t

S: 0.37%

GLV2



Cu: 1.29%

Au: 4.89 g/t

Ag: 49 g/t

Te: 48 g/t

S: 0.33%

GLV3



Cu: 0.45%

Au: 2.17 g/t

Ag: 23 g/t

Te: 33 g/t

S: 0.15%

GLV4



Cu: 0.36%

Au: 0.99 g/t

Ag: 19 g/t

Te: 14 g/t

S: 0.11%

GLV5



Cu: 0.29%

Au: 0.46 g/t

Ag: 7 g/t

Te: 9 g/t

S: 0.07%

No	Ticket No.	Sample Name	Weight (kg)	Class	Description	Magnetite	Chalcocite	mica	silicate
1	D124857	GLV1	0.907	CHALCOCITE	coarse chalcocite, silica mtx, some Bn and mal	0	15	5	80
2	D124858	GLV2	1.134	CHALCOCITE	more mal, green mica, coarser grains feld	0	20	20	60
3	D124859	GLV3	1.067	CHALCOCITE	granular pale grey qtz, secondary vein	0	10	0	90
4	D124860	GLV4	1.393	CHALCOCITE	dgg fineer grained zones, mafic mineral?	0	15	10	75
5	D124861	GLV5	0.678	CHALCOCITE	dgg finer grained zones, mafic mineral? Bn, oxidized	0	15	10	75

*McKnight assay results for 5 samples taken from waste dump*